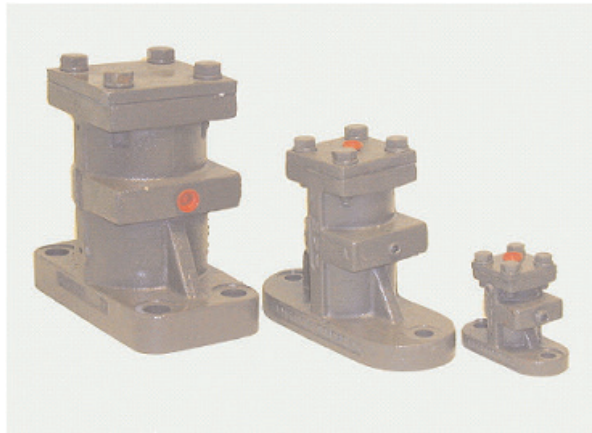


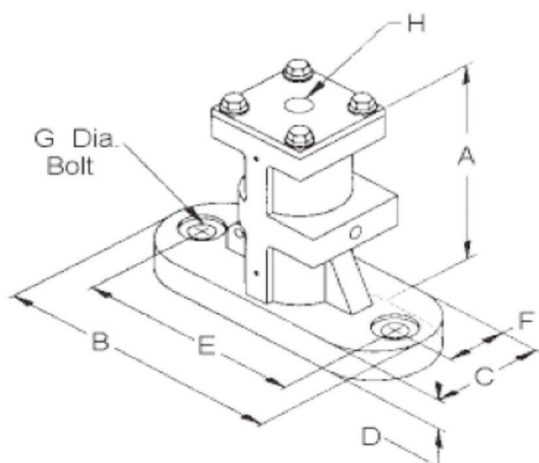
## Pneumatic Piston Linear Vibrator - HD

The BV range of pneumatic impacting vibrators are available in either single shot or continuous operation. The body is a heavy ductile iron casting with a hard chrome plated piston. They are virtually maintenance free when used in conjunction with a filtered and lubricated air supply. By regulating the air pressure the frequency and therefore the force can be easily controlled.

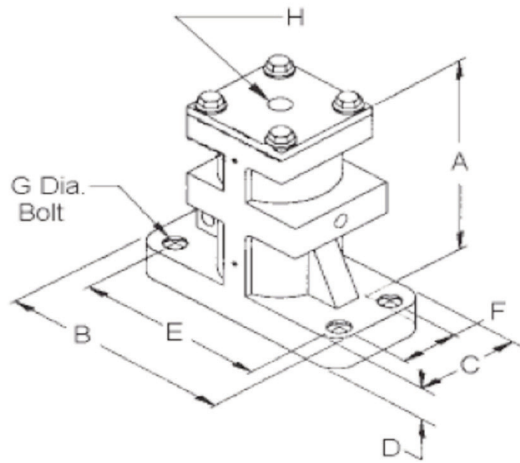


BV vibrators provide a cost effective solution on a wide variety of applications where noise is not a consideration, these include compacting and also material evacuation from bins and hoppers where bridging and rat-holing occur.

Model	Piston Dia mm	Weight kgs	Hopper Wall mm	Capacity in sloping section
BV 112	28	1.8	1.5-3.0	0.15m <sup>3</sup>
BV 150	38	4.1	1.5-3.0	0.4m <sup>3</sup>
BV 225	57	9.5	4.0-6.0	1.7m <sup>3</sup>
BV 312	80	24.0	6.0-10.0	12 tonnes
BV 425	108	44.4	10.0-12.5	55 tonnes
BV 650	165	176	10.0 & up	300 tonnes



**Models BV 112, 150 and 225**



**Models BV 312, 425 and 650**

MODEL	A mm	B mm	C mm	D mm	E mm	F mm	G mm	H
BV 112	33.1	114.3	50.8	12.7	88.9	25.4	12.7	1/4" BSP
BV 150	139.7	152.4	63.5	19.0	114.3	31.7	12.7	1/4" BSP
BV 225	184.1	228.6	88.9	25.4	190.5	44.4	15.8	1/4" BSP
BV 312	241.3	241.3	127.0	34.9	196.8	82.5	22.2	3/8" BSP
BV 425	304.8	355.6	152.6	38.1	304.8	101.6	25.4	1/2" BSP
BV 650	508.0	355.6	254.0	50.8	279.4	177.8	38.1	1/2" BSP

SINGLE IMPACTING FORCE (kgs/m)			
MODEL	2 Bar	4 Bar	6 Bar
BV 112	0.15	0.29	0.44
BV 150	0.69	1.38	2.08
BV 225	0.97	4.01	5.98
BV 312	5.67	11.35	16.88
BV 425	21.18	42.21	62.00
BV 650	29.89	59.79	89.68

CONTINUOUS IMPACTING									
MODEL	2 Bar (30 PSI)			4 Bar (60 PSI)			6 Bar (88 PSI)		
	Force (kgs)	Freq. RPM	Air L/ min	Force (kgs)	Freq. RPM	Air L/ min	Force (kgs)	Freq. RPM	Air L/ min
BV 112	33.1	4450	26	62.1	6200	57	97.5	7850	126
BV 150	62.1	3175	52	128	4600	98	182	5500	166
BV 225	144	2800	115	235	3600	172	318	4200	207
BV 312	314	2175	215	546	2900	301	787	3500	344
BV 425	474	1525	221	759	1950	373	1137	2400	451
BV 650	1319	975	708	2818	1425	1584	4525	1875	2605

**ProSpare**

Bestwood Road • Pinxton • Nottinghamshire NG16 6NT  
Tel • +44 (0)1773 814008 • Fax • +44 (0)1773 860055 • Email • sales@prospare.co.uk

[prospare.co.uk](http://prospare.co.uk)

We reserve the right to modify or withdraw specifications or products without notice or obligation.