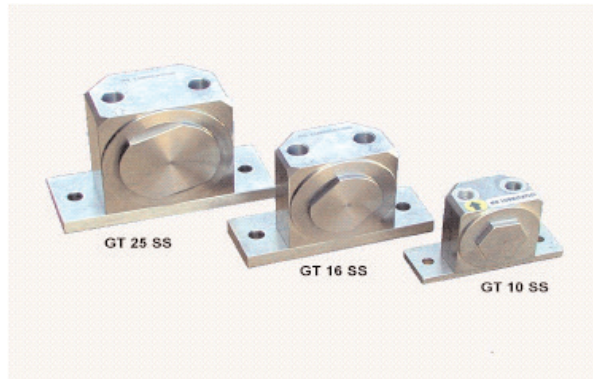


Pneumatic Turbine Rotary Vibrator - SS

The GTSS stainless steel turbine vibrator comprises of a body section, one end plate having right hand thread and a detachable foot.



The end plate should only be removed using the correct size face spanner. Vibration is produced by the centrifugal force of the positive and negative unbalanced moments in the rotor.

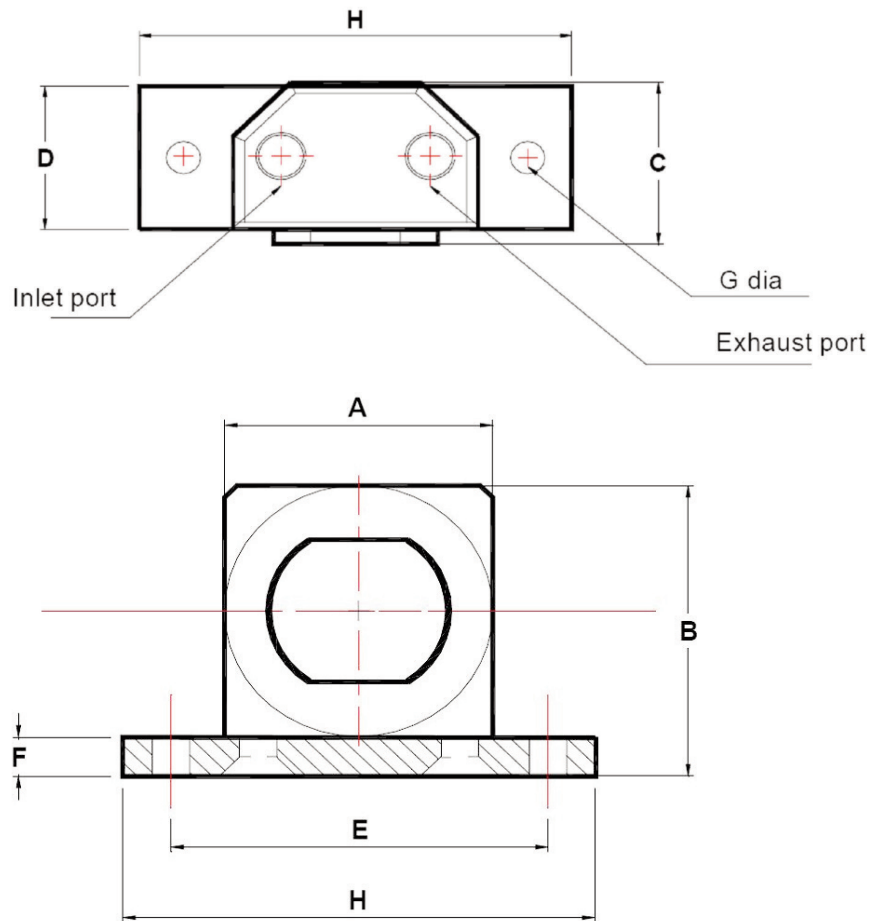
The rotor is supported on two heavy duty pre-lubricated matched sealed bearings. A special high performance grease ensures a long working life. The inner and outer raceways of the bearings are designed so that the bearings can easily be removed without using special tools.

Maximum temperature	120°C = 250°F
Noise level range	60 to 75 dBA

The GTSS range of turbine vibrators are particularly suitable for use in the food and pharmaceutical industries in hazardous areas where contact with non-ferrous materials, paint or exhaust contaminated oil is unacceptable.
No lubrication is required, but clean filtered air is essential.

These vibrators are extremely quiet and produce low noise levels on most applications, thus helping to conform with noise regulations.

On request can be supplied with ATEX certification
to **ATEX 95 95/9/EC**  **II 2 G & D Zone 2 & 22**



PERFORMANCE DATA

Type	Frequency V.P.M.			Centrifugal Force						Air Consumption / Minute					
	2 Bar 29 PSI	4 Bar 58 PSI	6 Bar 87 PSI	2 Bar N	29 PSI lbs	4 Bar N	58 PSI lbs	6 Bar N	87 PSI lbs	2 Bar Litr	29 PSI CF	4 Bar Litr	58 PSI CF	6 Bar Litr	87 PSI CF
GT10SS	27500	35000	37500	583	131	946	212	1086	243	46	1.6	80	2.8	112	3.9
GT16SS	17000	21500	24000	1103	247	1764	396	2198	493	120	4.2	200	7.0	290	10.2
GT25SS	12000	15500	17000	1784	400	2977	667	3581	803	185	6.6	325	11.4	455	15.9

DIMENSIONS

Model	A mm	B mm	C mm	D mm	E mm	F mm	G Dia mm	H mm	Inlet Port	Ex Port	Weight Kgs
GT10SS	49	55	38.1	30	68	6	7	86	1/8" BSP	1/8" BSP	0.625
GT16SS	64	74	45.5	40	90	10	9	113	1/4" BSP	1/4" BSP	1.307
GT25SS	78	88	55.5	50	104	10	11	128	1/4" BSP	1/4" BSP	2.284

Data obtained on a heavy laboratory test block. Frequency and force will decrease on a less rigid mount.

ProSpare

Bestwood Road • Pinxton • Nottinghamshire NG16 6NT
Tel • +44 (0)1773 814008 • Fax • +44 (0)1773 860055 • Email • sales@prospare.co.uk

prospare.co.uk

We reserve the right to modify or withdraw specifications or products without notice or obligation.